

Large-Scale Purse-Seine Vessels

Fishing for Tropical Tuna

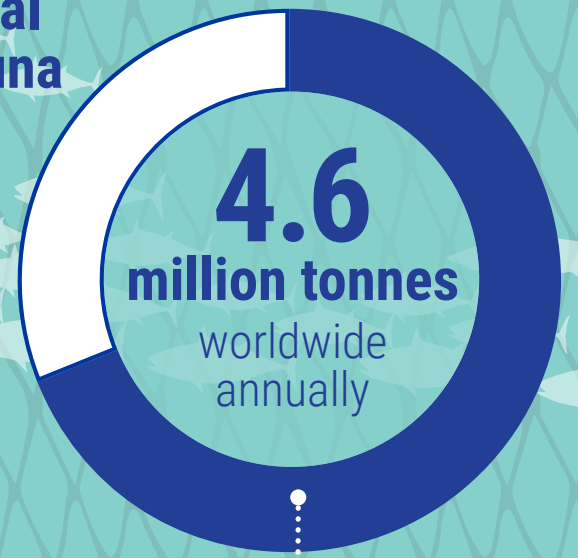


686

of all known purse seiners are **large-scale vessels** fishing for **tropical tunas**.

They have a combined fishing capacity of over **869,000 cubic meters (m³)**.

Total global tropical tuna catch:



Large-scale purse-seine vessels capture about **69%** of the world's tuna catch. Does not include albacore and bluefin tuna.

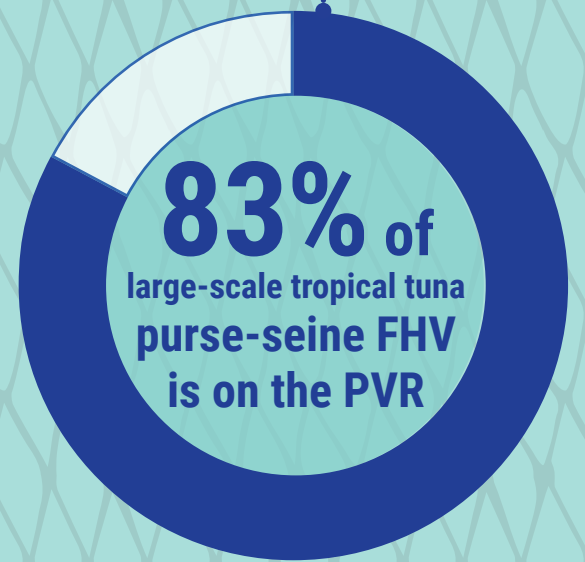
Of these, **515**

are registered on ISSF's

ProActive Vessel Register (PVR).

They have a combined fishing capacity of over **721,000 m³**.

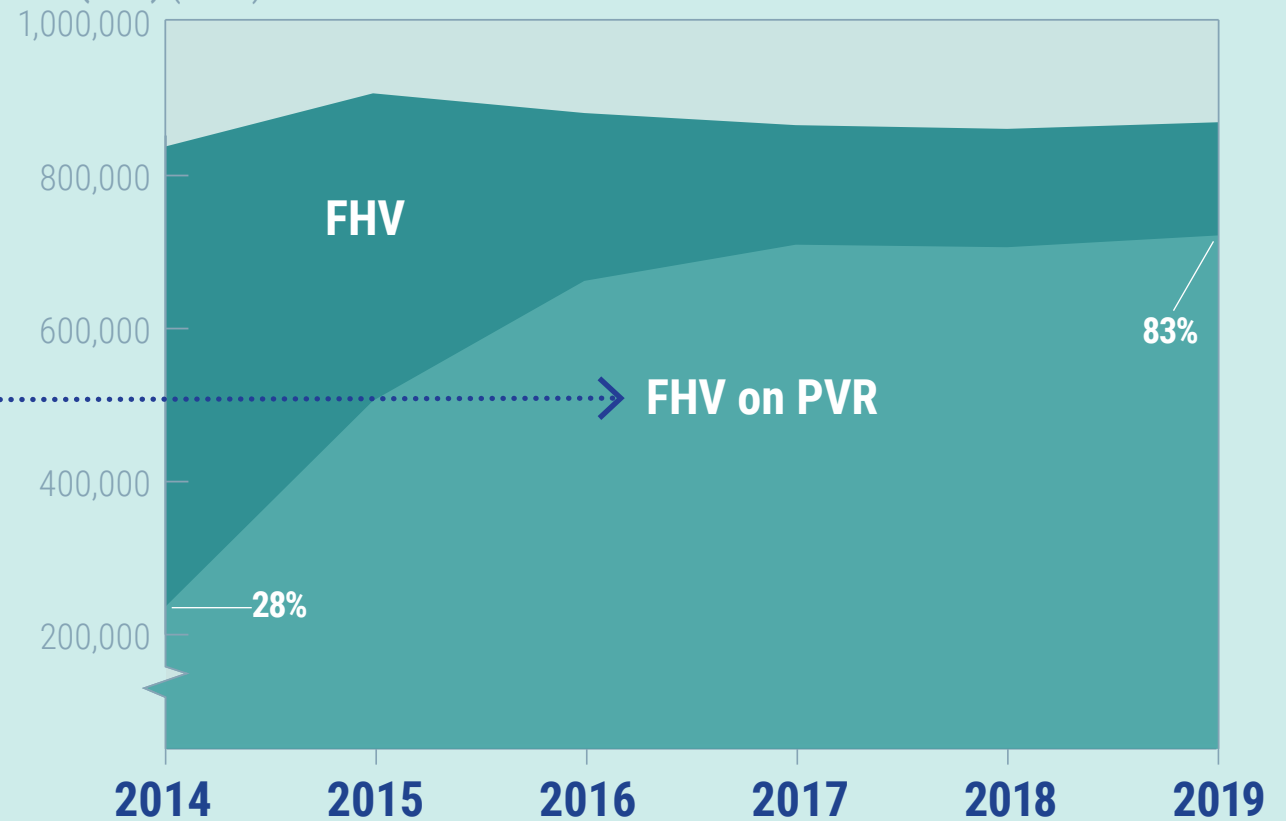
These represent **75%** of all purse-seine vessels that fish tropical tuna – in number of vessels – and **83%** in **Fish Hold Volume (FHV)**.



LARGE-SCALE PURSE-SEINE VESSELS FISHING FOR TROPICAL TUNAS

Change in total FHV 2014–2019

Fish Hold Volume (FHV) (in m³)



Transparency has increased.

Download the Purse Seine Snapshot Report

[ISSF 2019-09: A Snapshot of the Large-Scale Tropical Tuna Purse-Seine Fishing Fleets as of June 2019](#)