

2016

Year in Review



RESULTS

32 Retailers have ISSF conservation measures or PVR in internal or public sourcing guidelines



182 RFMO advocacy letters sent by trade is more than **2x** the number sent in 2015

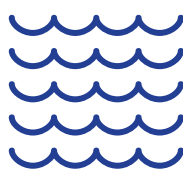


15 At-Sea Research Expeditions and **+\$12 MILLION** invested in identifying bycatch solutions, to date



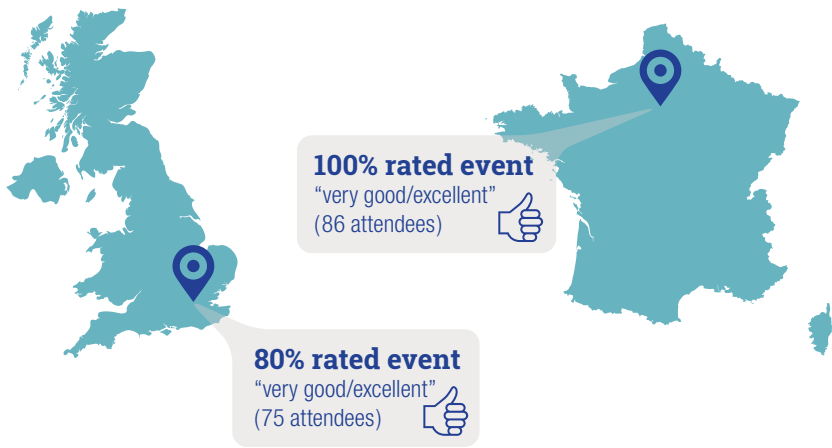
Days of at-sea **RESEARCH** to date

&



14 SCIENTISTS working in **5 OCEAN REGIONS**

2 Retailer Forums London & Paris

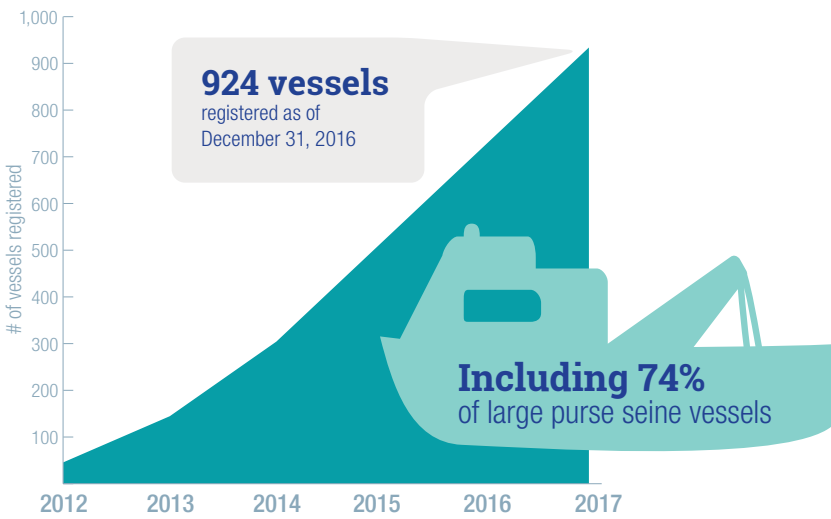


10 Board Members from **6 COUNTRIES**

28 Participating Companies **75%** of the global canned tuna market



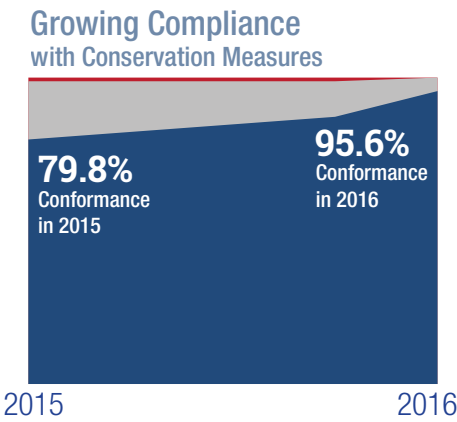
ProActive Vessel Register GROWTH



ISSF COMPLIANCE CRITERIA have become **MORE RIGOROUS**

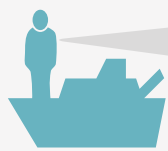


While PARTICIPATING COMPANIES CONTINUALLY IMPROVE



SKIPPERS WORKSHOPS

1,200+ FISHERS reached to date



Enough to place 1+ ISSF-trained fisher on **EVERY** large purse seine vessel operating today



Workshops extended to **CHINA & VIETNAM** for the 1st time

NEW CONSERVATION MEASURES on FADs, Traceability & Capacity



2.3



3.5

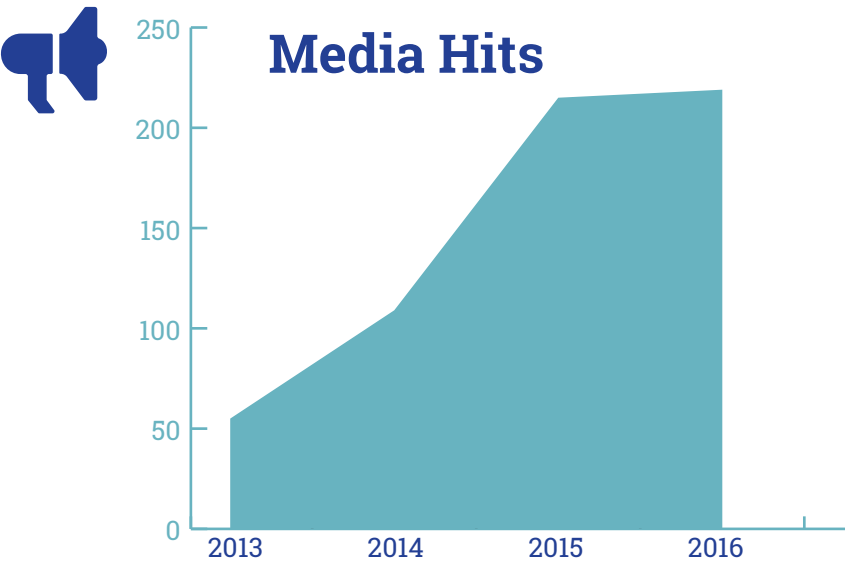


6.2(d)



6.2(e)

PUBLICATIONS & MEDIA HITS



21 of WCPFC Science Committee meeting papers published by or citing ISSF / IATTC: 7; IOTC: 16; ICCAT: 12

Annual Report



1,300+ VIEWS

50+ ISSUES of E-News



click-through rate more than **2x** the industry average, reaching **+6,000** influencers

18 TECHNICAL REPORTS published

